

***Auto Pilot Mode  
For  
Quick Glance v. 4.5***

**Overview**

Auto pilot is a special mode which enables Quick Glance to automatically calibrate and begin operation as soon as it sees the user's eye in position.

This mode was originally developed for gaze tracking exhibits in science museums or other public displays, but it may also be useful for some disabled individuals who have difficulty with the calibration process. It is not as accurate as the standard modes with a full calibration.

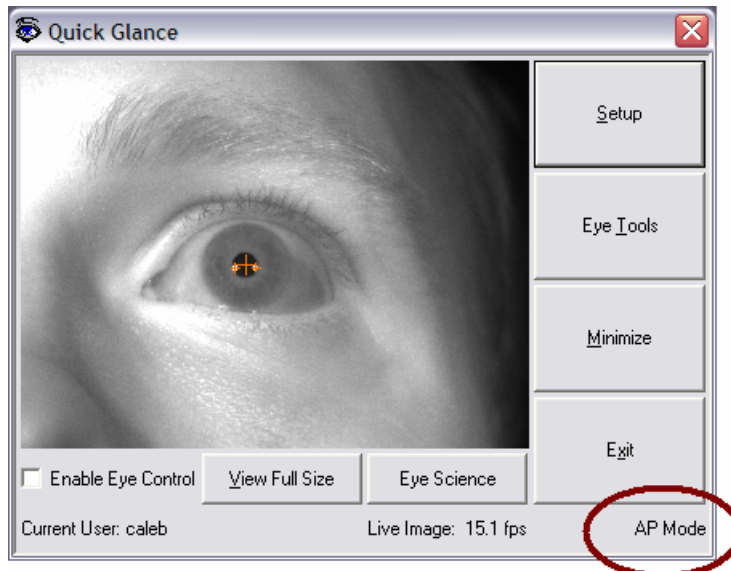
**Concept of Operation**

With Auto Pilot enabled Quick Glance will display a full-screen video of whatever the camera is seeing. The video display helps the user to get in proper position with his eye in sharp focus. As soon as the eye appears in focus, colored crosshairs will appear on the pupil and track its motion. After about three seconds of tracking Quick Glance will minimize itself and the cursor will begin following the user's gaze.

If the user moves away, Quick Glance will restore the full-screen video image and wait for the next user to appear. Calibration is done automatically while the user stares at his pupil in the video image. It is usually natural to stare at the center of the pupil because of the crosshairs tracking its every move. Quick Glance relies on this fact to perform a simple calibration.

### Detailed Instructions

- Create a user and and calibrate the system with a standard 16 point calibration.
- Go to the eye tools and enable a clicking method if desired.
- Navigate to "Setup\More Options" and check the box next to "Enable Auto Pilot".
- Return to the opening screen. You should notice the text "AP Mode" indicating auto pilot in the lower right hand corner of the Quick Glance window.



- Check the box "Enable Eye Control" and the large video window will immediately appear.
- Stare at the center of your pupil until the video image disappears. Now you are in full auto pilot tracking mode.

If you need to exit auto pilot to change clicking methods or any other options, just perform a hardware mouse click on the large video image of the eye. This will uncheck the "Enable Eye Control" check box and restore control of all system options.