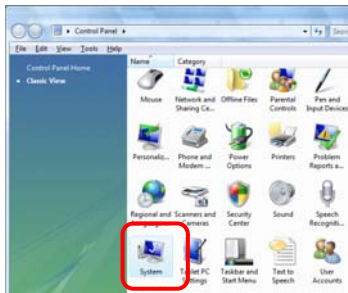
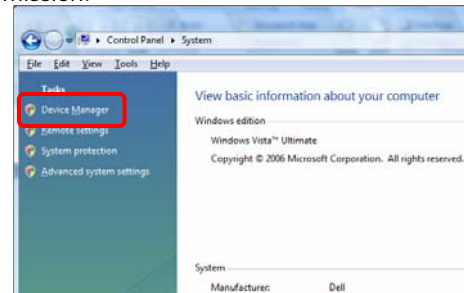


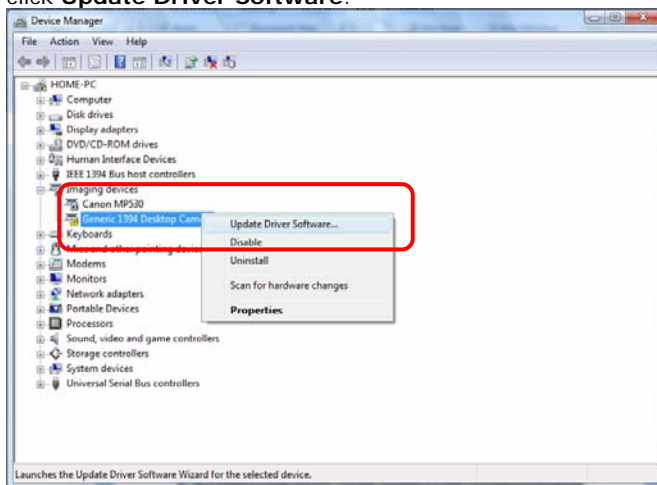
1 Open **Windows Control Panel** and click on **System**.



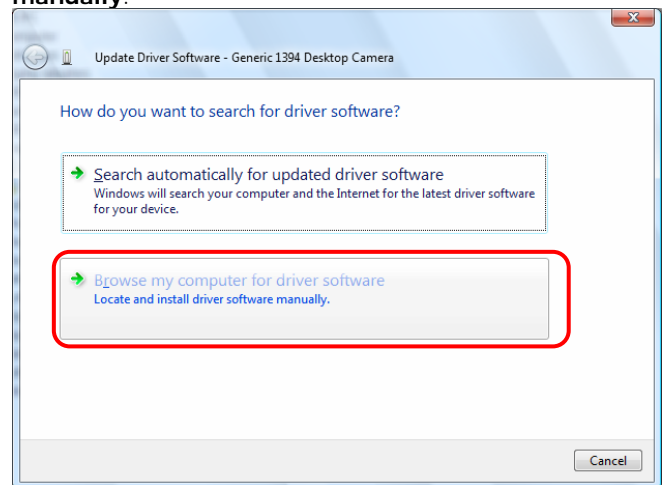
2 Click on **Device Manager**. Click **Continue** if necessary to give permission.



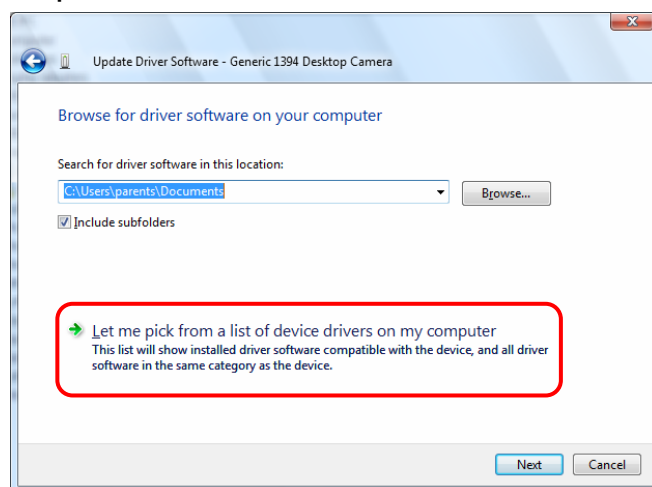
3 Locate **Generic 1394 Desktop Camera**. Right click it and click **Update Driver Software**.



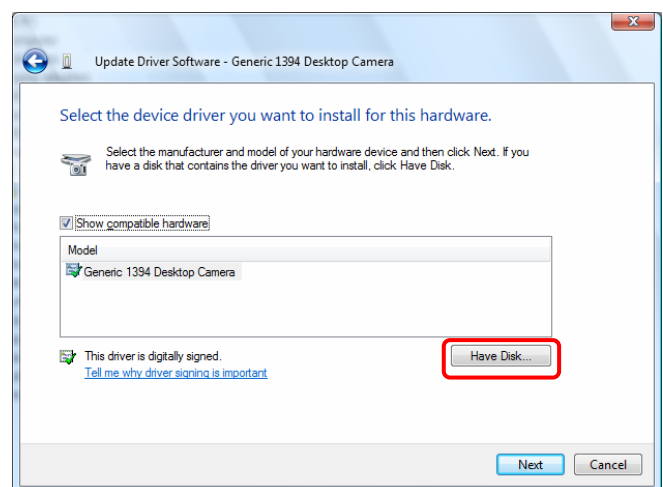
4 Click **Browse my computer for driver software manually**.



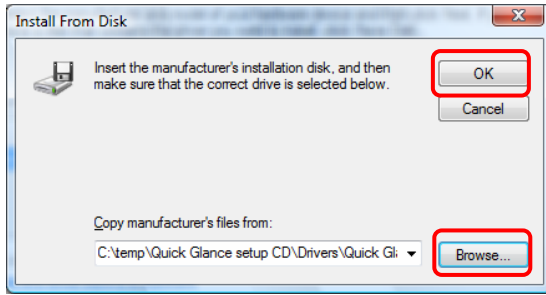
5 Click **Let me pick from a list of device drivers on my computer**.



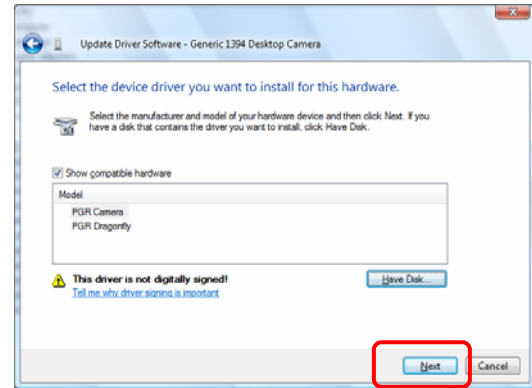
6 Click **Have Disk**.



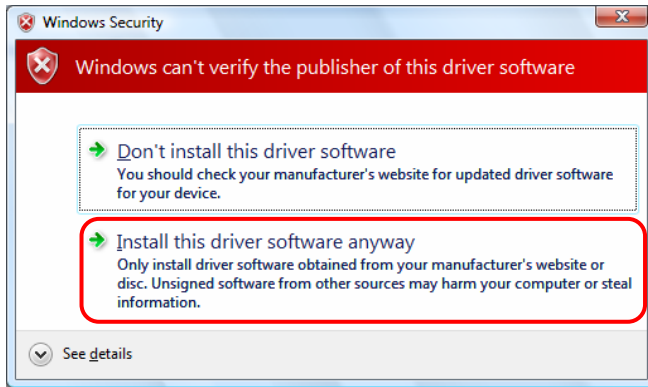
7 Click **Browse**. Select the driver location. The driver is located on the CD in the **Drivers** folder. Click **OK**.



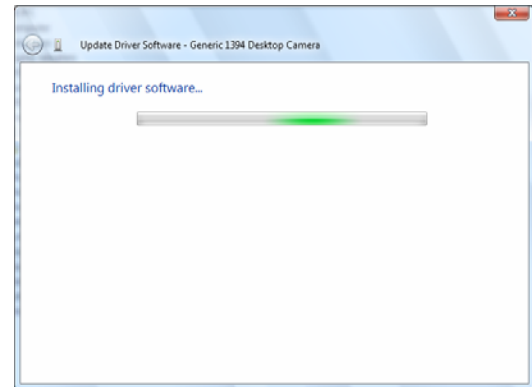
8 Click **Next**.



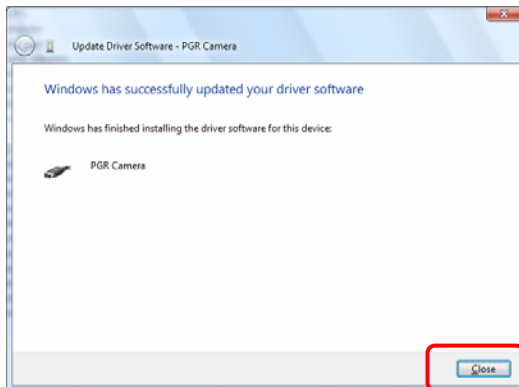
9 Click **Install this driver software anyway**.



10 The drivers will install.



11 Click **Close**.



12 When Complete it will appear like this.

